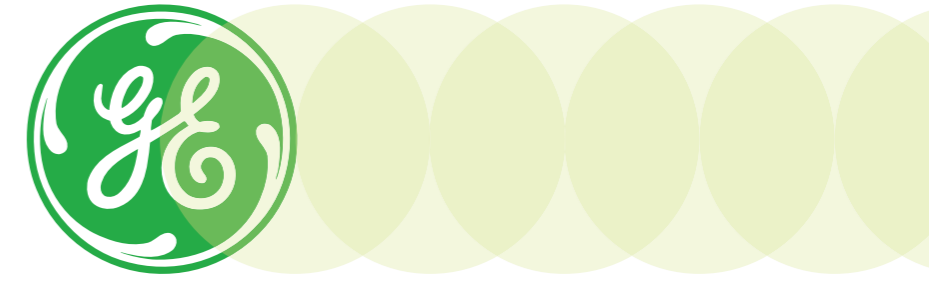


ULTRASOUND INFERTILITY CARE

Professor R. Fanchin, M.D., Ph.D, Hopital Antoine Beclere Clamart

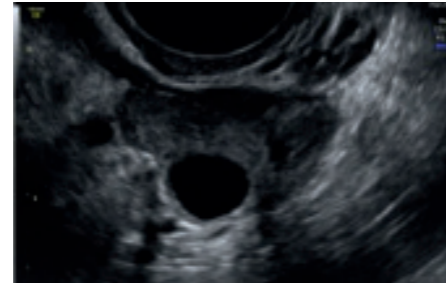


OVARIAN FUNCTION

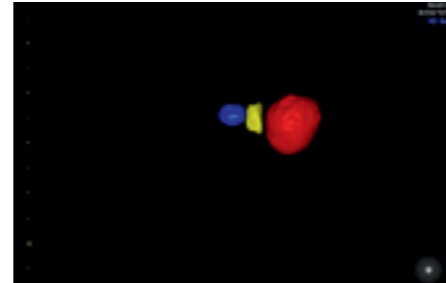
NATURAL CYCLE



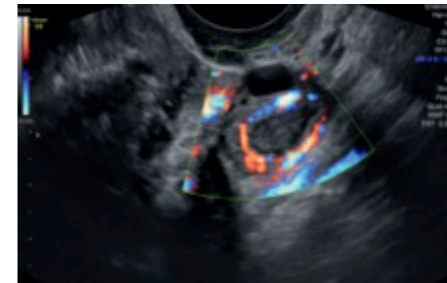
Manual antral follicle count (AFC)



Single dominant follicle

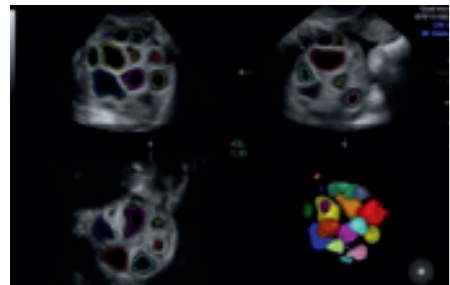


Single dominant follicle with SonoAVC*



Vascularized corpus luteum

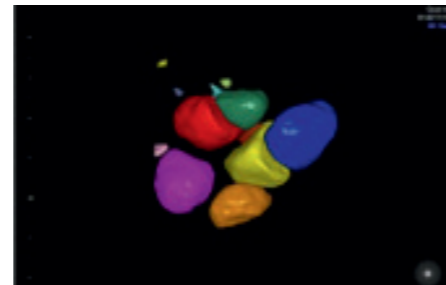
STIMULATED CYCLE



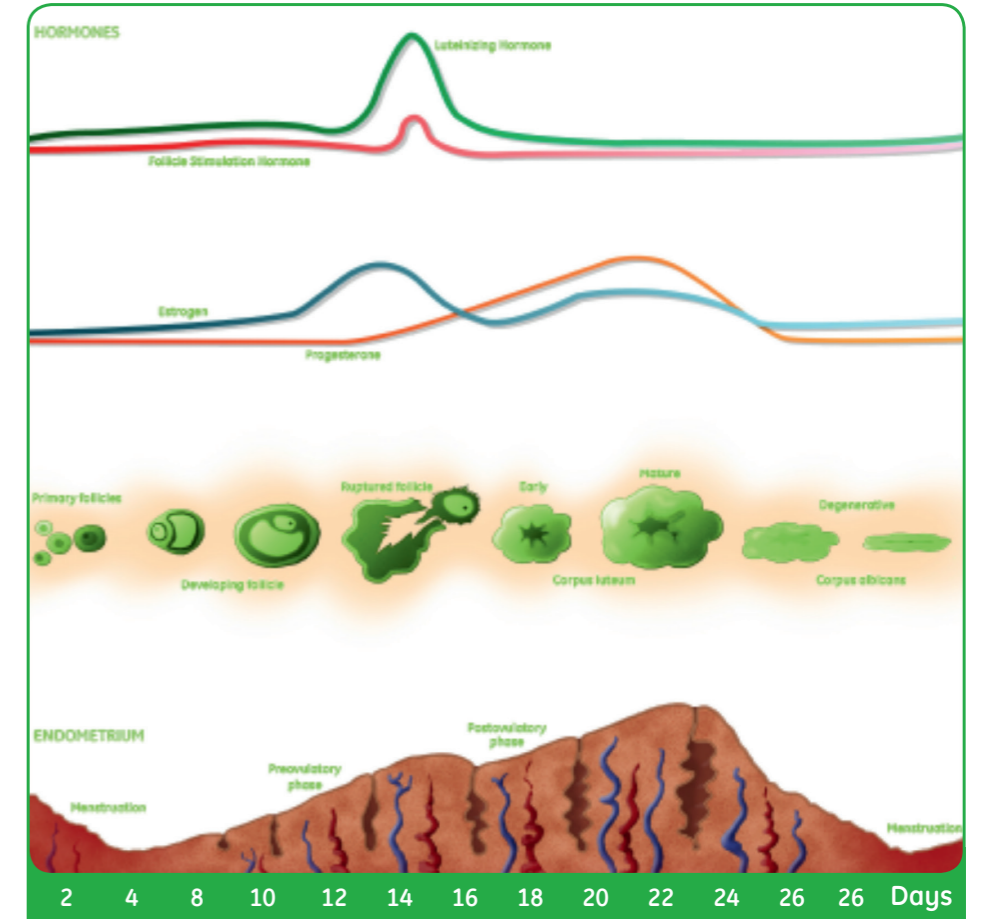
Automated AFC with SonoAVC



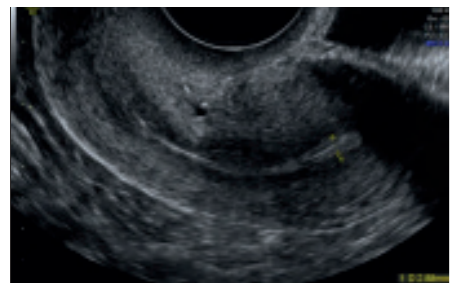
Stimulated follicles



Stimulated follicles with SonoAVC



ENDOMETRIAL FUNCTION



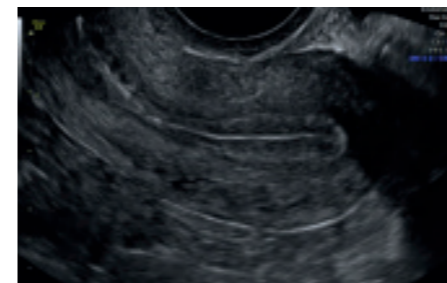
Day 3



Day 6



Day 8



Day 13



Day 16



Day 24

INFERTILITY VOLUSON TOOLS:

Wide sector	B-View	HD-Flow	OmniView	3D	2D	B-Flow	IOTA**	Vocal	SonoAVC
Large sector	Lateral view	Micro-vascularization	Sagittal and frontal view	Fibroid localization	Embryo droplet after ET	Sono-hystero-Salpingography	Risk measurement	Endometrium quantification	Stimulated follicles

*SonoAVC is a trademark of General Electric Company ** IOTA is not for use in USA and Japan JB21579XE